



MODEL 5222 | Specification Sheet
Residential Series • Step Light

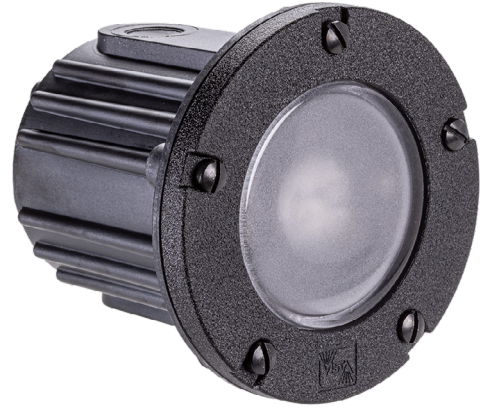
TYPE: MODEL:

PROJECT:

PRODUCT FEATURES



| | |
|------------|--------------------------|
| Wattage | 4.5 W or 5.5 W |
| Voltage | 9 – 15 VAC |
| Lumens | 295 or 389 Lumens |
| Lamp Type | MR-16 LED |
| Housing | Injection-Molded Polymer |
| Dimensions | 5" DIA x 4¾" D |



ORDERING INFORMATION

EXAMPLE: *SL-5222-B-4.5-W-36-CFR*

| CATEGORY | MODEL | FINISH | LED | ACCESSORIES |
|----------|-------|--------|-----|-------------|
| | 5222 | | | |

| CATEGORY | MODEL | FINISH | LED | ACCESSORIES |
|---------------|-------|-------------------------------|--|---------------------------------------|
| SL Step Light | 5222 | B Black | 4.5-W-15 4.5 Watts Warm 15° Narrow Spot | CBL Crowned Cool Blue Lens |
| | | Z Architectural Bronze | 4.5-W-25 4.5 Watts Warm 25° Spot | BL Flat Cool Blue Lens |
| | | DZ Dark Bronze | 4.5-W-36 4.5 Watts Warm 36° Flood | SL Flat Spread Lens |
| | | GT Granite | 4.5-W-60 4.5 Watts Warm 60° Wide Flood | DBL Flat Dark Blue Lens |
| | | W White | 5.5-W-15 5.5 Watts Warm 15° Narrow Spot | GL Flat Dark Green Lens |
| | | BR Architectural Brick | 5.5-W-25 5.5 Watts Warm 25° Spot | RL Flat Red Lens |
| | | LZ Light Bronze | 5.5-W-36 5.5 Watts Warm 36° Flood | YL Flat Amber Lens |
| | | SB Special Bronze | 5.5-W-60 5.5 Watts Warm 60° Wide Flood | HL Honeycomb louver |
| | | GG Glossy Gray | NL No Lamp | JBCP-150 Concrete Mounting Kit |
| | | R Rust | | |
| | | HG Hunter Green | | |
| | | WB Weathered Bronze | | |
| | | WI Weathered Iron | | |
| | | GM Graphite Metallic | | |
| | | G Verde | | |
| | | P Pewter | | |
| | | M Mocha | | |
| | | OF Olde Finish | | |



**PROFESSIONAL
OUTDOOR LIGHTING**

www.VistaPro.com • email@vistapro.com • Fax: (888) 670-VISTA (8478)
1625 Surveyor Avenue • Simi Valley, CA 93063 • (805) 527-0987 • (800) 766-VISTA (8478)

Vista Professional Outdoor Lighting reserves the right to modify the design and/or construction of the fixture shown without further notification.



SPECIFICATIONS

HOUSING CONSTRUCTION:

Injection-molded glass-reinforced polymer.

LENS COVER CONSTRUCTION:

Injection-molded glass-reinforced polymer.

FINISH:

Powder coat finish for Aluminum Door Cover available in Black, Architectural Bronze, Dark Bronze, Granite, White, Architectural Brick, Light Bronze, Special Bronze, Glossy Gray, Rust, Hunter Green, Weathered Bronze, Weathered Iron, Graphite Metallic, Verde, Pewter, Mocha and Olde Finish.

LENS:

Frosted, tempered glass lens.
Optical effect lenses are available.

MOUNTING:

Recessed mounting box has two 1/2" NPT inlets.
Optional concrete mounting kit available.

FASTENERS:

All fasteners are stainless steel.

WIRING:

Provided with a 36" pigtail of 18-2 direct-burial cable and underground connectors.

CERTIFICATION:

UL Listed to U.S. and Canadian safety standards for low voltage landscape luminaires (UL 1838).

LED:

MR-16 LED Lamp.
295 or 389 Lumens.
4.5 or 5.5 Watts.

ELECTRICAL:

Input voltage range 9 - 15 VAC.
Low voltage transformer required to operate (sold separately).

LIGHT DISTRIBUTION:

Very Narrow Spot **15** (15°)
Narrow Spot **25** (25°)
Medium Flood **36** (36°)
Wide Flood **60** (60°)

DIMENSIONS

